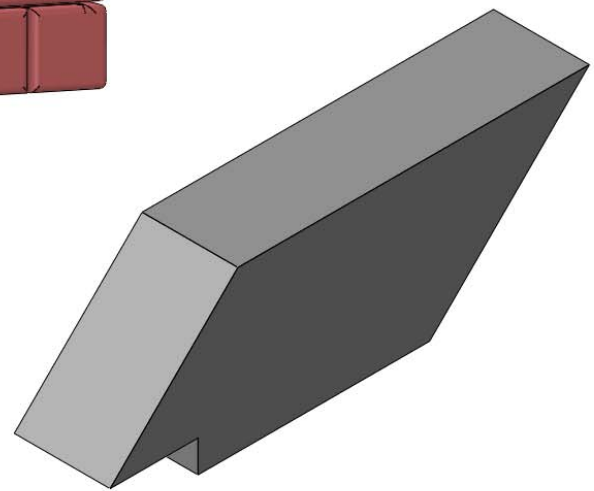
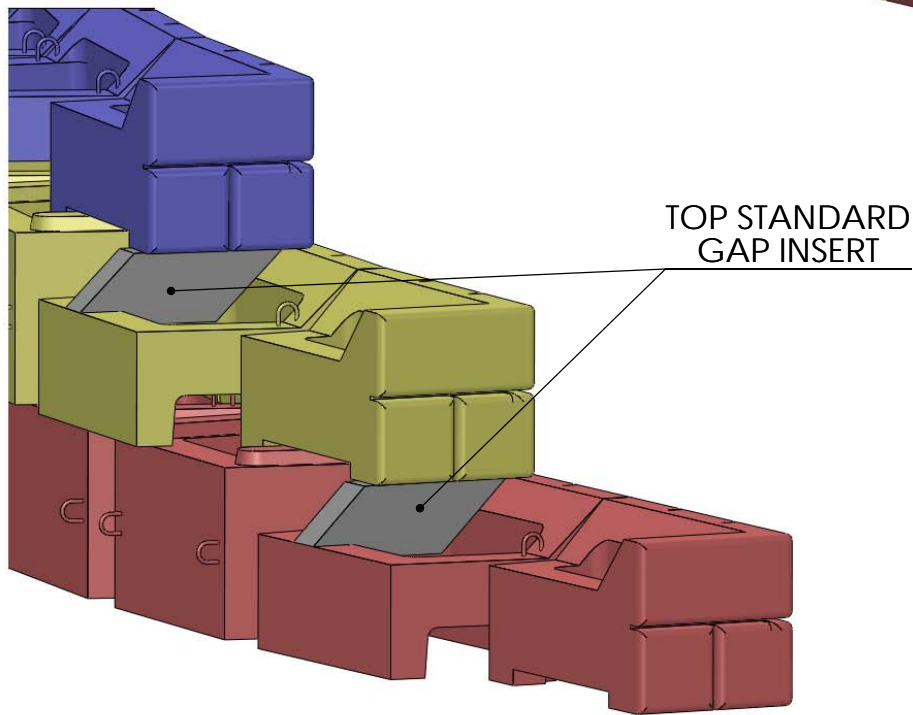
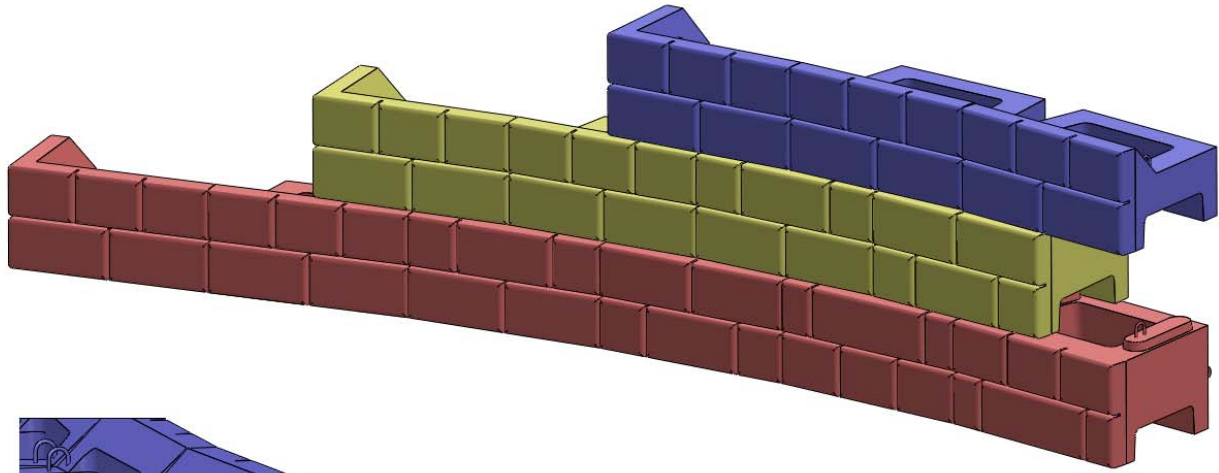


6' STEP DOWN WITH TOP STANDARD GAP INSERT



TOP STANDARD GAP INSERT



DRAWN BY	DATE
DAN BALLING	12/12/2013
16500 SOUTH 500 WEST BLUFFDALE, UTAH 84065 PHONE: (801) 571-2028	

TITLE:	6' STEP DOWN
DWG NO.:	WD-9
SCALE: 1: 40	SHEET 1 OF 1